

M110 SERIES



Intelligent industrial modem

Maestro M110 modems are designed to provide connectivity across a broad range of M2M and IoT applications. They allow Internet connectivity via serial port to PLCs, Meters, Vending Machines. They help transporting data from any industrial device to data control servers, allowing businesses to benefit from real-time data monitoring, management and control.

Available in NB-IoT and LTE-M1

mPack Software Suite
with Workbench configuration tool

Last Gasp
(factory option)

Two 2- or 3-way versatile I/Os



Smart
Metering



POS &
Kiosks



Oil & Gas
Monitoring



Vending
Machines

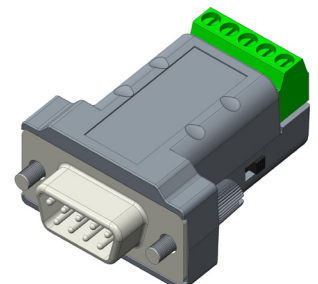


Industrial
Automation

SNAP CAP™

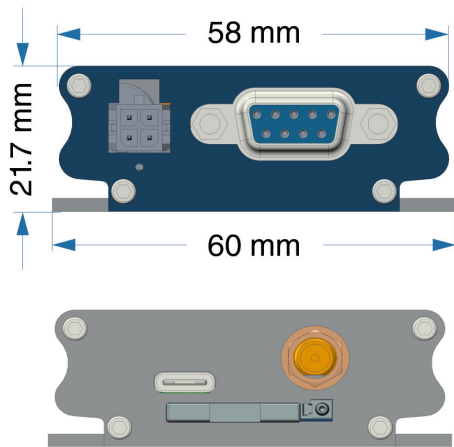
Snappily converts M110 series' RS-232 port on a 9-pin sub-D connector into an *isolated**, half- or full-duplex (user-selectable via a slide switch) RS-485 port on a 5-pin, 3.5 mm pitch, COMBICON connector.

* i.e with integrated transformer, thus allowing for 1.5 km-long cabling



D2SPHERE™ device management services let you monitor, diagnose, control and update your Maestro and FALCOM devices. Information such as signal strength, geographic location, battery state, temperature, device firmware and software versions can be remotely monitored, stored and presented to help you maintain connectivity, manage quality of service and prevent downtime.

M110 Series specifications



SOFTWARE (mPack software suite)

- Connectivity**
- Dial-up
 - TCP / UDP permanent client / server or on-demand client with two TCP / UDP sockets for failover,
 - Network connectivity watchdog
- Miscellaneous features**
- Support for concatenated SMS
 - Conversion between Modbus RTU and Modbus TCP
 - Configurable text and recipients upon Last Gasp
- DoTA** via user's HTTP server or D2SPHERE™
- Configuration** via Workbench through RS-232 or, when available, USB; also via SMS, Telnet or D2SPHERE™

HARDWARE

- Casing** Extruded Aluminium
- Dimensions** 60 x 60 x 21.7 mm
- Weight** Approx. 80 g
- Operating temperature range**
- Class A: -30°C ~ +70°C
 - Class B: -40°C ~ +85°C
- Memory**
- Flash memory [executable]: 256 KB standard; 1 MB upon request
 - RAM: either 40 KB (M111 and M112) or 96 KB (M113 and M115); 192 KB upon request

POWER

- Main Source** 8 VDC ~ 32 VDC w/ Slow Start and absorption of 2G current bursts

INTERFACES

- RS-232** on a 9-pin sub-D connector
1. DCD
 2. Rx
 3. Tx
 4. DTR
 5. Ground
 6. DSR
 7. RTS
 8. CTS
 9. RI
-

- USB** on a Type-C connector (M113 and M115 only)

- I/Os** Two versatile* I/Os, either 2-way (M111 and M112) or 3-way (M113 and M115 only)

- Cellular antenna** External on an SMA connector

- SIM interface** 2FF SIM 1.8 V / 3.0 V

- LEDs** Two

* i.e. user-configurable, each one independently from the other, as (i) analogue input; or (ii) digital output (2-way); or (iii) analogue input suited to the so-called 'current loop' sensors – aka 4 mA ~ 20 mA sensors (3-way)

MODEL NAME	TERRITORIES & OPERATORS	CELLULAR TYPE	BANDS	FALL-BACK MODE	BANDS	PLANNED APPROVALS AND CERTIFICATIONS			C/A	ORDER CODE
						REGULATORY	INDUSTRY	OPERATOR		
M110 IGN	World	Ingenu	2.4 GHz							M110#IGN
M111	EMEA and Asia	2G*	3/8			RED	GCF			M111#02
M111	World excl. Japan and Korea	2G*	2/3/5/8							M111
M112	EMEA	NB-IoT**	8							M112#8
M112	EMEA	NB-IoT**	20							M112#K
M112	EMEA	NB-IoT**	8/20							M112#8K
M112	Asia Pacific	NB-IoT**	5							M112#5
M112	Asia Pacific	NB-IoT**	28							M112#S
M113	Verizon Wireless	LTE-M1***	13			FCC Cl. I Div. 2				M113#D
M113	AT&T Wireless, T-Mobile USA and Sprint	LTE-M1***	2/4/5/12			FCC Cl. I Div. 2	PTCRB			M113#245C
M113	Asia Pacific	LTE-M1***	3/5/8/28							M113#358S
M115	EMEA and Asia	3G****	1/8	2G	3/8					M115#02
M115	World	3G****	1/2/5/8	2G	2/3/5/8					M115

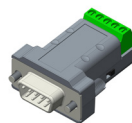
Please consult us regarding the models shown in grey which are subject to MOQ and other conditions

*with support for CSD calls **27.2 kbps downlink, 62.5 kbps uplink
 ***375 kbps downlink, 375 kbps uplink
 ****7.2 Mbps downlink, 5.76 Mbps uplink

ACCESSORIES



Power adapters



SNAP CAP™



USB cable



Antennas



DIN Rail clip