



# Product Data Sheet

WS-WMMG-7-27

# 2G / 3G / 4G LTE

## Wall Mount Gain MiMo Antenna



### WS-WMMG-7-27

- Supports MiMo & diversity across 2G / 3G / 4G
- Two wideband elements with gain
- Durable wall mount housing
- Suitable for mast, wall and desk mounting

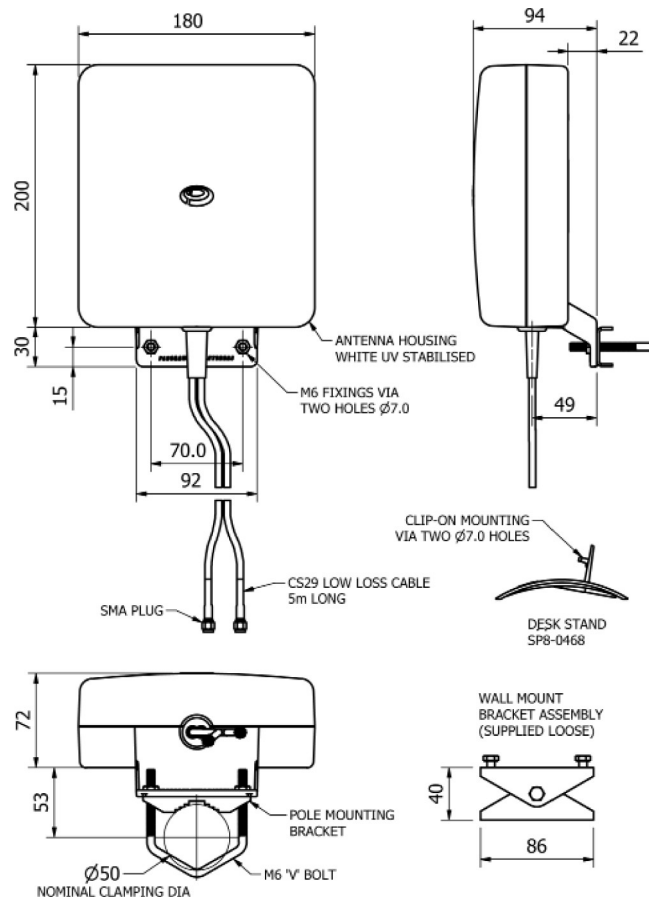
The WS-WMMG antenna provides an innovative and future proof solution for 2G / 3G and 4G networks. Incorporating two separately fed ultra wideband elements in a single housing the WMMG is equipped to provide client side MiMo and diversity support for the networks of today and tomorrow. With 6dBi gain peak at 698-960MHz, 9dBi gain peak at 1710-2700MHz the WS-WMMG provides extra gain performance where it is needed most.

The rugged, weatherproof housing is designed for wall mounting and wall and mast mount brackets are provided.

5 metres of fitted low loss double shielded twin cable minimises exposed connector joints and simplifies cable management for easy installation.

The WS-WMMG is a cost effective value added product for network operators and service providers ensuring a stable link with improved data rates for subscribers thereby improving satisfaction and retention.

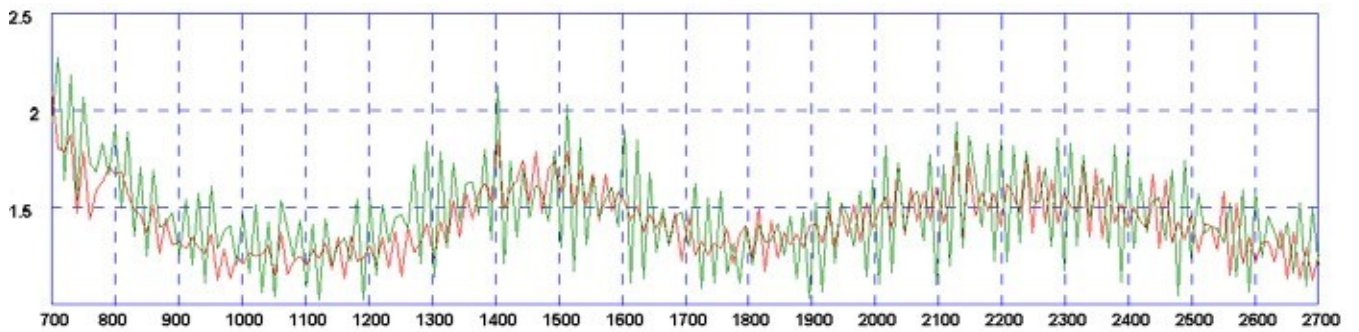
#### Technical Drawing



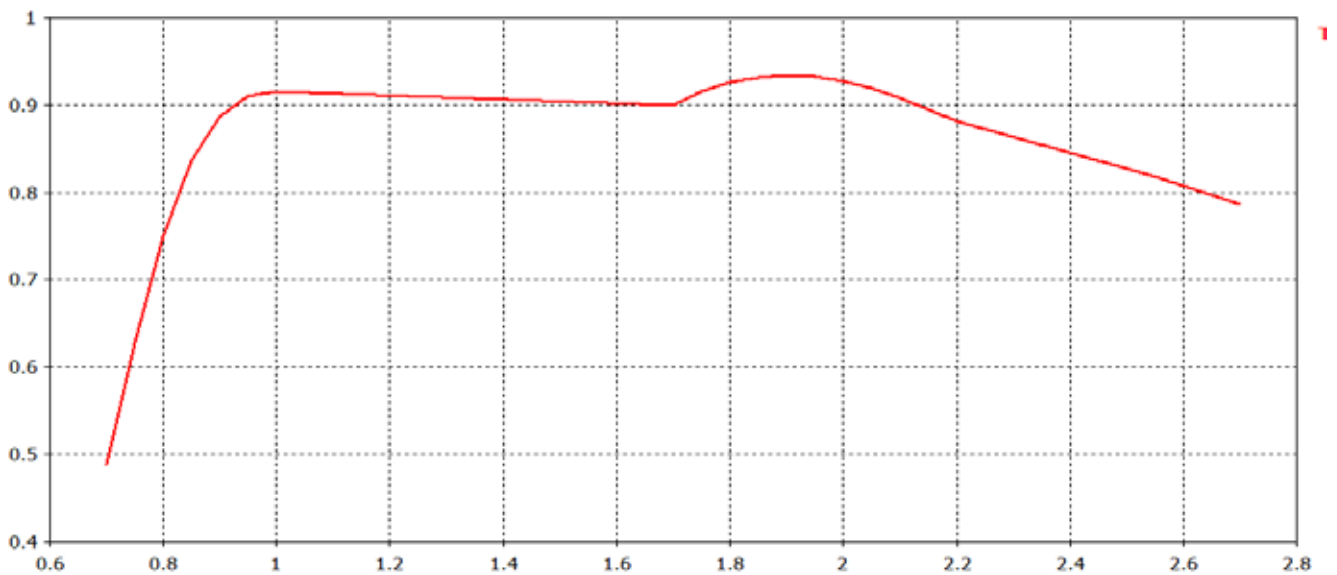
# WiMAX / LTE

## Wall Mount Gain MiMo Antenna

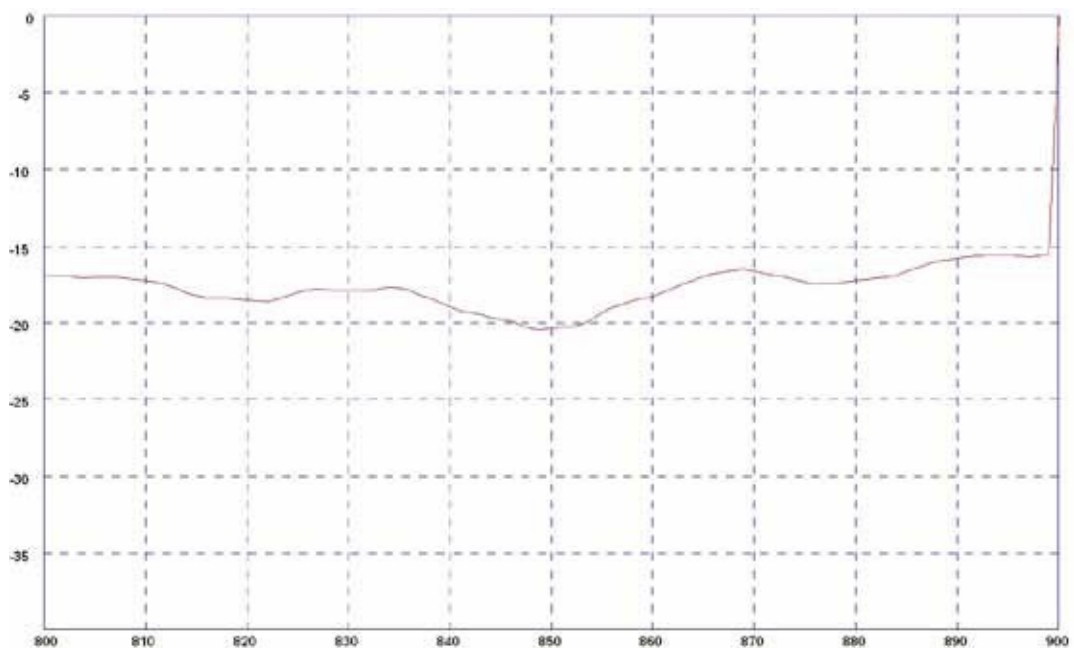
Typical VSWR Elements 1 & 2



Typical Efficiency



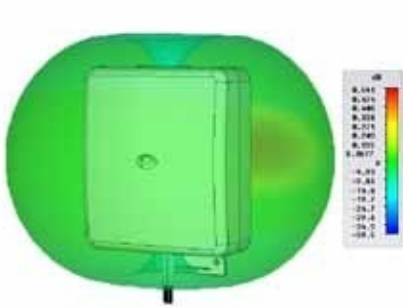
Element Isolation



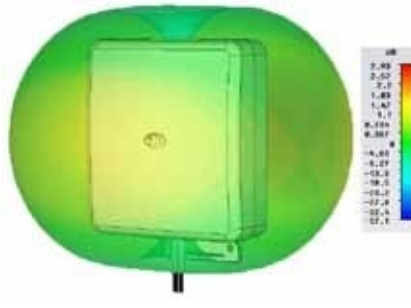
# WiMAX / LTE

## Wall mount Gain MiMo Antenna

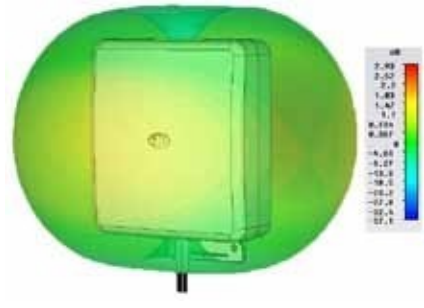
3D Gain Plot (750MHz)



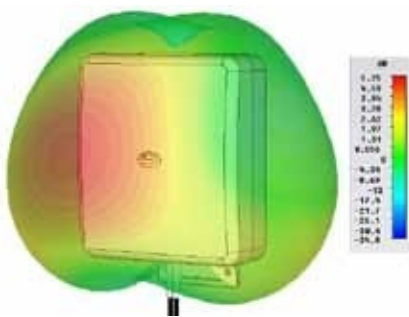
3D Gain Plot (850MHz)



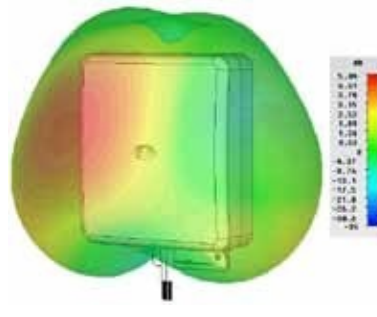
3D Gain Plot (950MHz)



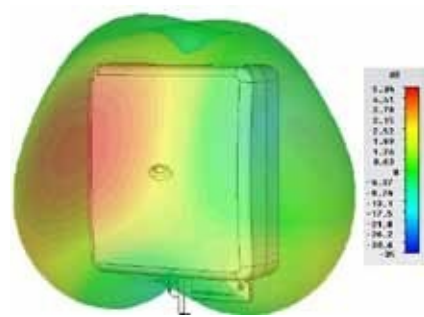
3D Gain Plot (1800MHz)



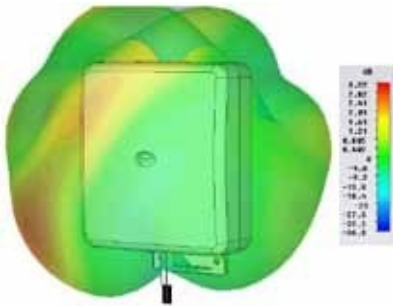
3D Gain Plot (1900MHz)



3D Gain Plot (2100MHz)



3D Gain Plot (2600MHz)



# 2G / 3G / 4G LTE

## Wall mount Gain MiMo Antenna

<b>Part No.</b>		WS-WMMG-7-27
<b>Electrical Data</b>		
Frequency Range (MHz)	Antenna 1	698-960 / 1710-2700
	Antenna 2	698-960 / 1710-2700
Operational bands	2G / 3G / 4G	
Radiation pattern	Directional	
VSWR	< 2:1	
Peak Gain (excluding cable loss)	698-960MHz	6dBi
	1710-2700 MHz	9dBi
Efficiency - excluding cable loss (all bands)	> 65%	
Correlation co-efficient ( all bands)	< 0.05	
Element isolation	> 20dB	
Max input power (W)	20 Watts	
Impedance	50Ω	
<b>Mechanical Data</b>		
Dimensions (mm)	Height	230
	Width	180
Operating temp (°C)	-30° / +70°C	
Material	U.V. Stabilised, Impact resistant ASA	
Colour	RAL9010 (Pure White)	
Ingress Protection	Equivalent to IP66	
<b>Mounting Data</b>		
Fixing	Wall mount / mast mount / desk mount	
Mounting bracket material	Stainless steel / Aluminium	
Pole diameter (mm)	20-50 / (0.78 - 1.96")	
<b>Cable Data</b>		
Type	2 x CS29 Coax	
Diameter (mm)	5 (0.2")	
Length (m)	5 (16')	
Termination	2 x SMA (m)	
Adaptor Pigtails	Supplied separately	